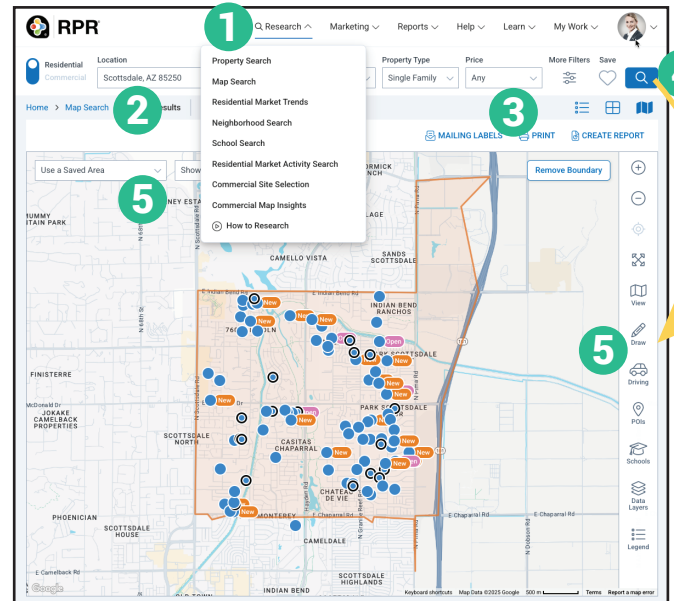




How do I start a map search?

- 1 Click *Research*, select *Map Search*.
- 2 Enter a geographic area into the search bar.
- 3 Use the filters and advanced filters to narrow down your search.
- 4 Select the magnifying glass to search.
- 5 Choose one of the following map tools to start your analyses: *Draw*, *Driving*, *Use a Saved Area*, or *Show Geographies*.

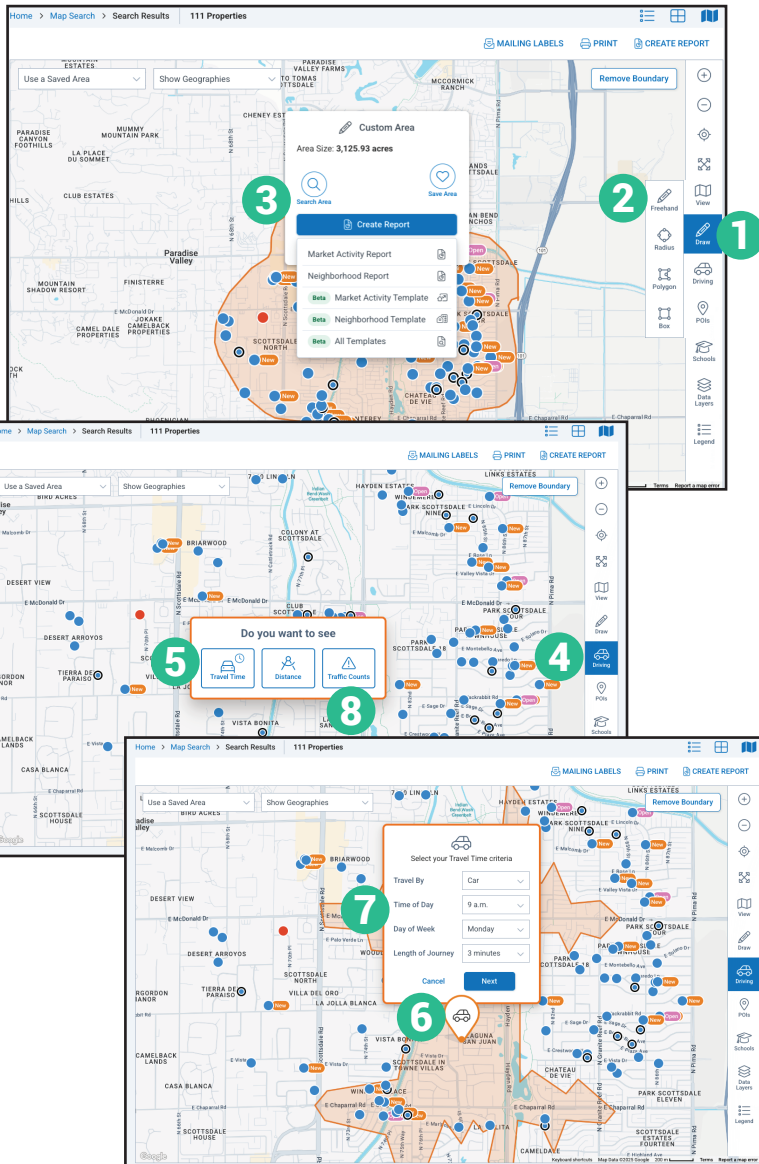


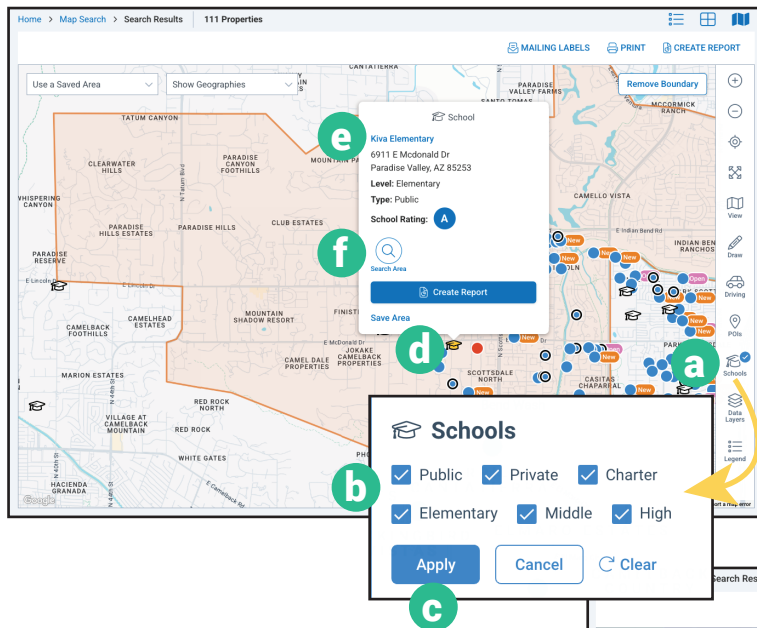
Draw:

- 1 Click *Draw*.
- 2 Select *Freehand*, *Box*, *Radius*, or *Polygon*.
- 3 Each option operates differently but is also intuitive, i.e., holding down the mouse to draw your map.
- 4 Release the mouse to complete the search shape.
- 5 A pop up will offer options to *Search Area*, *Save Area*, *Create Report* or *Edit* the area.

Drive & Traffic Counts:

- 1 Click *Driving*.
- 2 Select *Travel Time* or *Distance*.
- 3 Move the map pin or enter an address in the search bar.
- 4 Click *Next*.
- 5 Set your travel time criteria from the map overlay.
- 6 A pop up will offer options to *Search Area*, *Save Area*, *Create Report* or *Edit* the area.
- 7 Select *Traffic Counts* to view current and historical traffic counts on the map.



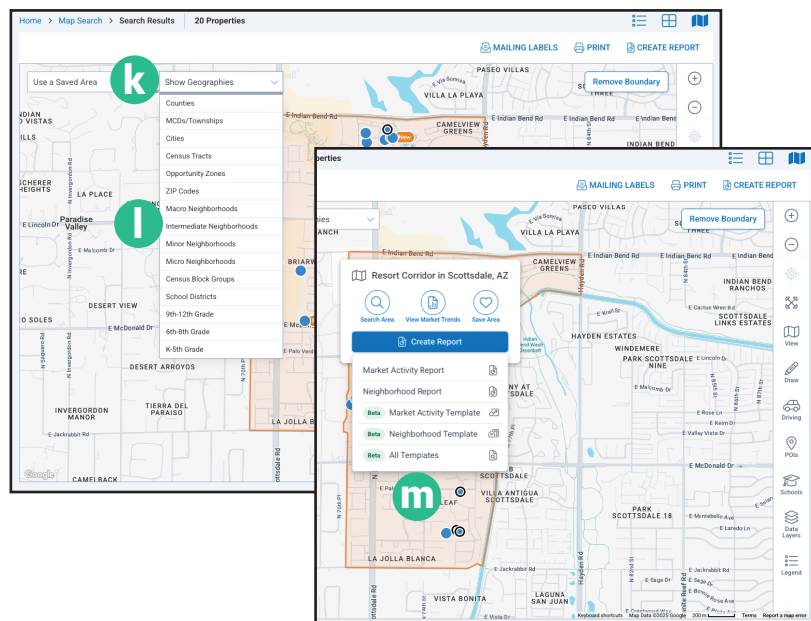
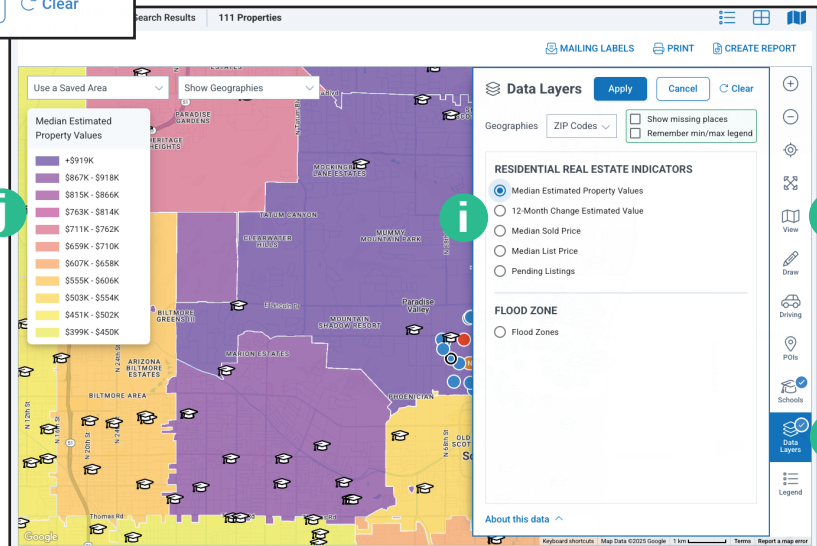


Schools:

- Select **Schools**.
- Choose **Public**, **Private**, or **Charter**. Select **Elementary**, **Middle**, or **High School**.
- Click **Apply**.
- Select the graduation cap icon to see general school information, address, level, type and school rating.
- Select the name of the school to view full details and reviews.
- Select **Search Area** to search within school district boundaries.

Data Layers:

- Choose **View** and then **Road** view to better visualize the data.
- Select **Data Layers**.
- Choose an indicator such as **Median Estimated Property Value** or **Flood Zones** to visualize the similarities and differences.
- A legend to help interpret the data is displayed on the upper left of the map.



Show Geographies:

- On the upper left of the map, select **Show Geographies**.
- Choose a geography listed in the dropdown.
- Zoom level on the map will change depending on the selection.
- With geographies displayed, select a boundary for search options.