

# Printable: Market Activity

The image is a composite of three screenshots from the RPR web application, illustrating the steps to create a customized Market Activity Report. The screenshots are annotated with numbered circles 1 through 7.

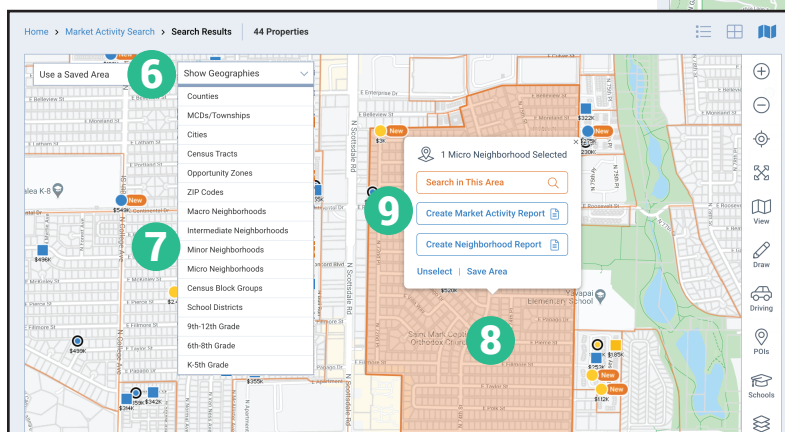
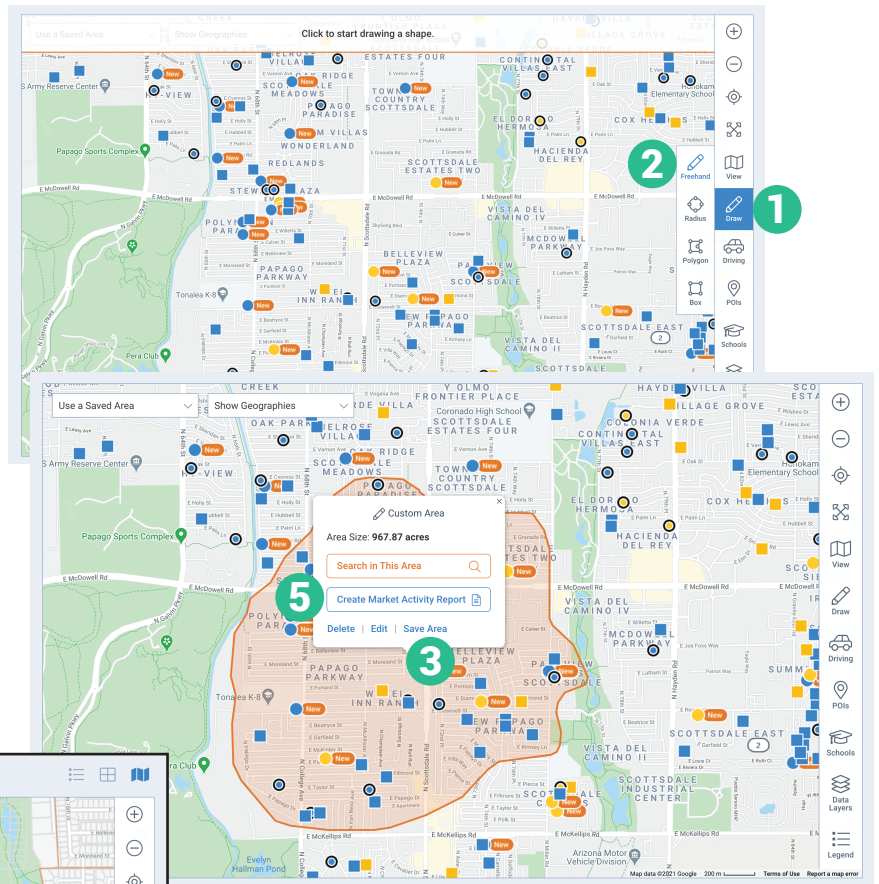
- Step 1:** The user is on the 'Research' tab. A dropdown menu is open, showing 'Residential Market Activity Search' as the selected option.
- Step 2:** The user has entered 'Scottsdale, AZ 85250' in the 'Location' field.
- Step 3:** The user has selected '4 Selected' under the 'CHANGE TYPE' section.
- Step 4:** The user has selected '3 Selected' under the 'More Filters' section.
- Step 5:** The user has clicked the 'Update and Search' button.
- Step 6:** The user has selected a shaded geography outline on the map.
- Step 7:** The user has clicked the 'Create Market Activity Report' button.

## Create a customized Market Activity Report

- 1 Select *Research*, select *Residential Market Activity Search*.
- 2 Enter a location for your search.
- 3 Select *Change Type* to include specific property status. Also set how far back to look for changes.
- 4 Select *More Filters* to add additional search criteria.
- 5 Select *Update and Search*.
- 6 Select the shaded geography outline.
- 7 Click *Create Market Activity Report*.

# Create Market Activity Report with Draw Tool

- 1 Select *Draw*.
- 2 Select *Freehand*.
- 3 Click *Save Area* and name this custom area.
- 4 Click *Save Area* again.
- 5 Click *Create Market Activity Report*.
- 6 Choose *Market Activity Report* on the reports generation page and follow the steps to create your report.



## Create Market Activity Report for a Custom Geography

- 6 Select the *Show Geographies* dropdown.
- 7 Choose an area to display on the map.
- 8 Select the orange custom geography.
- 9 Select *Create Market Activity Report*.
- 10 Choose *Market Activity Report* on the reports generation page and follow the steps to create your report.

